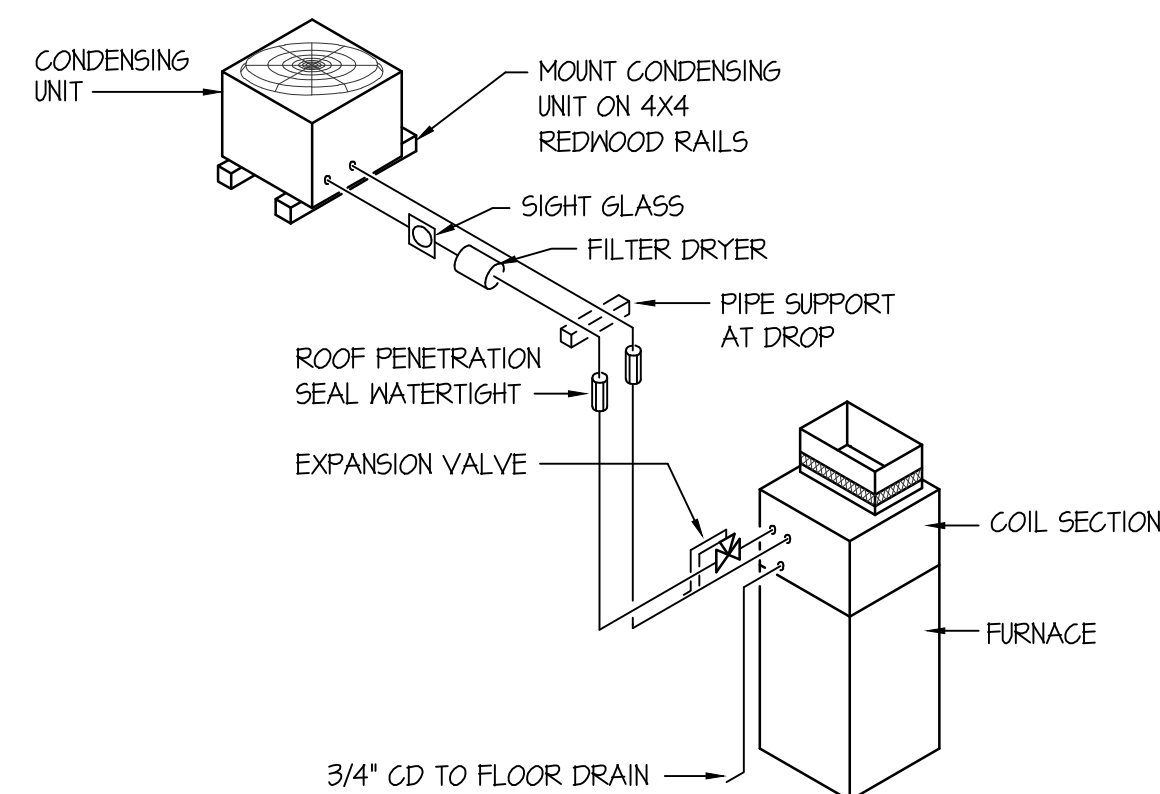
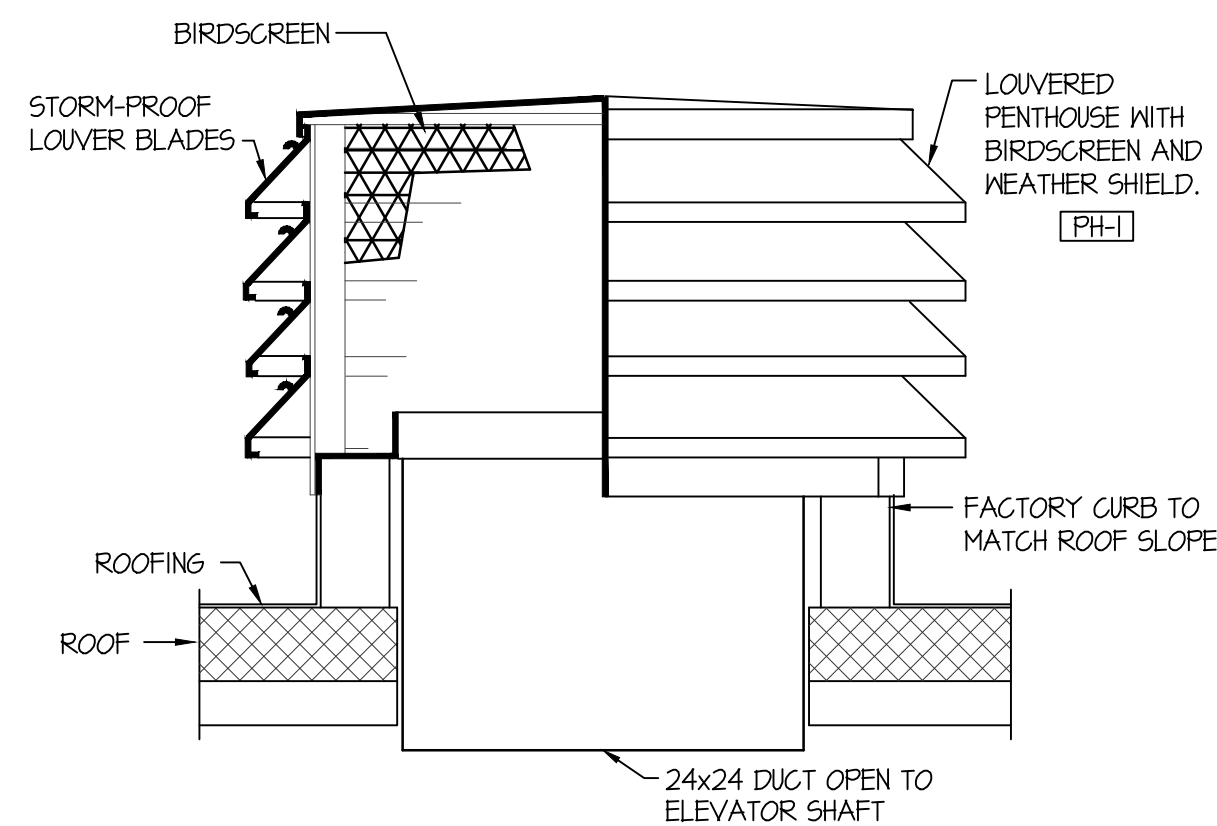


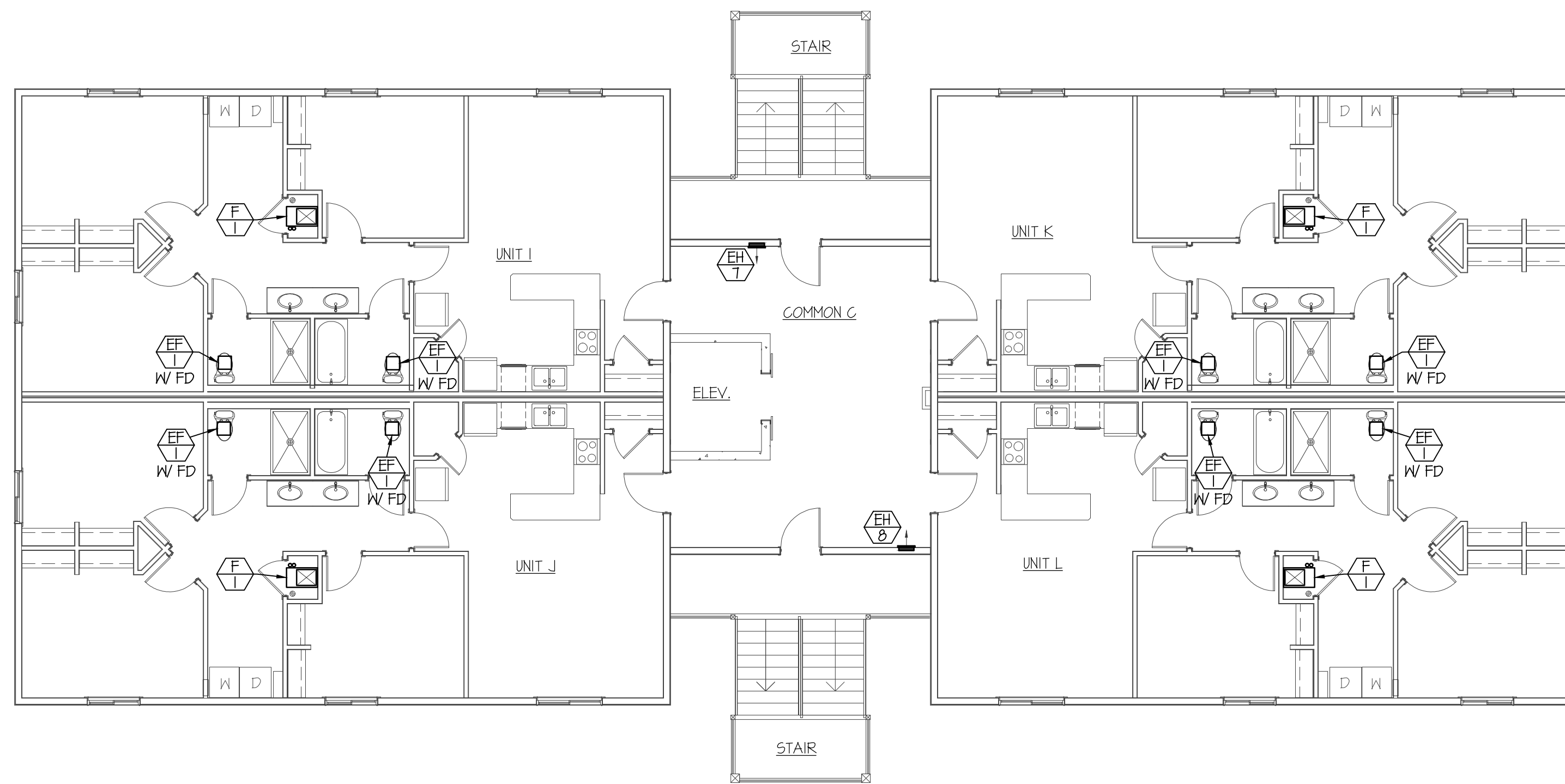
**PIPING THRU ROOF DETAIL**  
NO SCALE



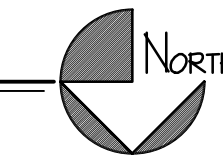
**REFRIGERANT PIPING DIAGRAM**  
NO SCALE (5 TON AND SMALLER)



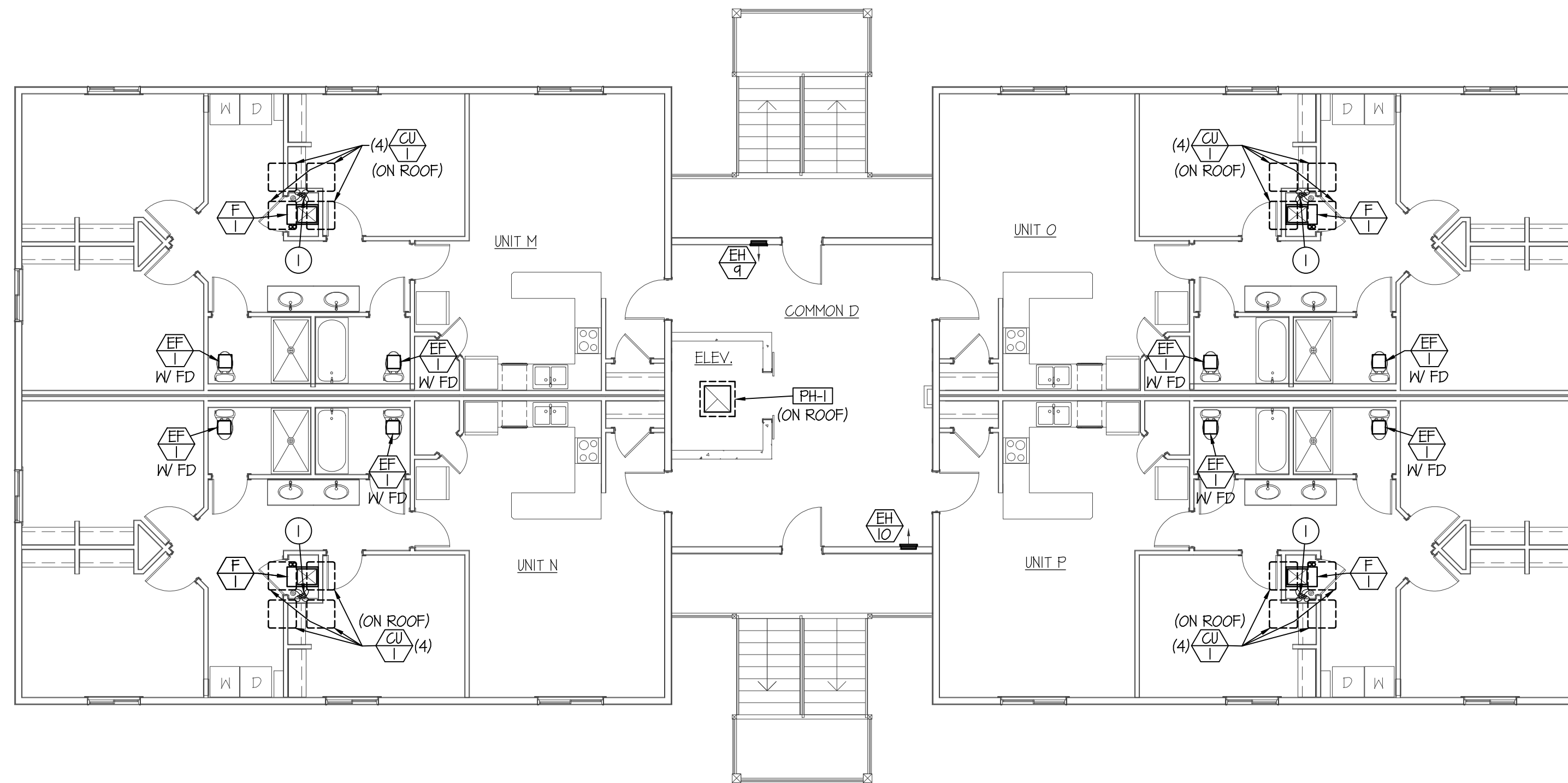
**PENTHOUSE DETAIL**  
NO SCALE



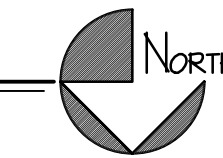
**2ND LEVEL MECHANICAL PLAN**  
SCALE: 1/8" = 1'-0"



**SPECIAL NOTE:**  
SEE LARGE SCALE PLANS ON SHEET M-3 FOR TYPICAL DUCTWORK AND MECHANICAL EQUIPMENT LAY-OUT FOR INDIVIDUAL APARTMENT TYPES.



**3RD LEVEL MECHANICAL PLAN**  
SCALE: 1/8" = 1'-0"



**PLAN NOTES:**

- DROP (4) SETS OF REFR. PIPING DOWN THRU ROOF TO SERVE (4) FURNACES BELOW. SEAL ROOF PENETRATION WEATHERTIGHT. SEE DETAIL ON THIS SHEET.



**Engineered Systems Associates**  
**Mechanical Engineers**

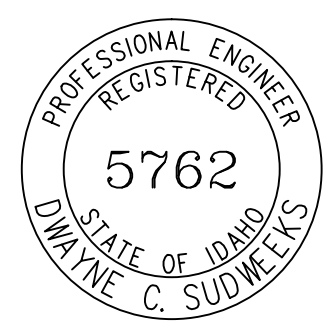
Dwayne Sudweeks  
1355 East Center - Pocatello, Idaho 83201  
Phone: (208) 233-0501 Fax: (208) 233-0529 email: esn@engsys.com

**SAVOYE APARTMENTS**  
**REXBURG, IDAHO**

**2ND & 3RD LEVEL MECHANICAL PLANS**

PROJECT:

SHEET TITLE:



DRWN. BY:	CKD. BY:
SR	DCS
JOB NO.	DATE:
17035	MAY 2017

ORIGINAL DRAWING SIGNED BY: DWAYNE C. SUDWEES  
DATE ORIGINAL SIGNED: MAY 5, 2017  
ORIGINAL ON FILE AT ENGINEERED SYSTEMS ASSOCIATES  
1355 EAST CENTER, POCA TELLO, IDAHO 83201

SHEET:  
**M-2**  
OF: THREE